



Wan upgrade project: Large Manufacturing house

WAN Network Upgrade Project

“A leading Auto ancillary company part of a \$2 billion dollar group.”

Executive Summary

The Project involved a Wide area network refresh along with access switches covering 35+ location across India. The client network is based on a MPLS network from 2 service providers for high availability. The Cisco based infrastructure by us about 8 years back based on 1900 series routers. The setup was enabling SAP connectivity to the client centrally hosted datacenter

Challenges

The primary challenges around the existing network were;

- The routing equipment has become end of life and end of support from Cisco systems.

- The Network had limited ability to enable prioritization for critical business traffic.
- Had limited network management ability
- Datacenter Switches also need upgrade
- The network firewalls to be upgraded with Intrusion detection and Malware protection

Results, Return on Investment and Future Plans

The important requirement of end user application response was met by the new AVC based network infrastructure

This deployment has yielded significant results for the IT team. This new infrastructure has enable the IT organization and for all its current needs and has future proofed the network for future requirements.

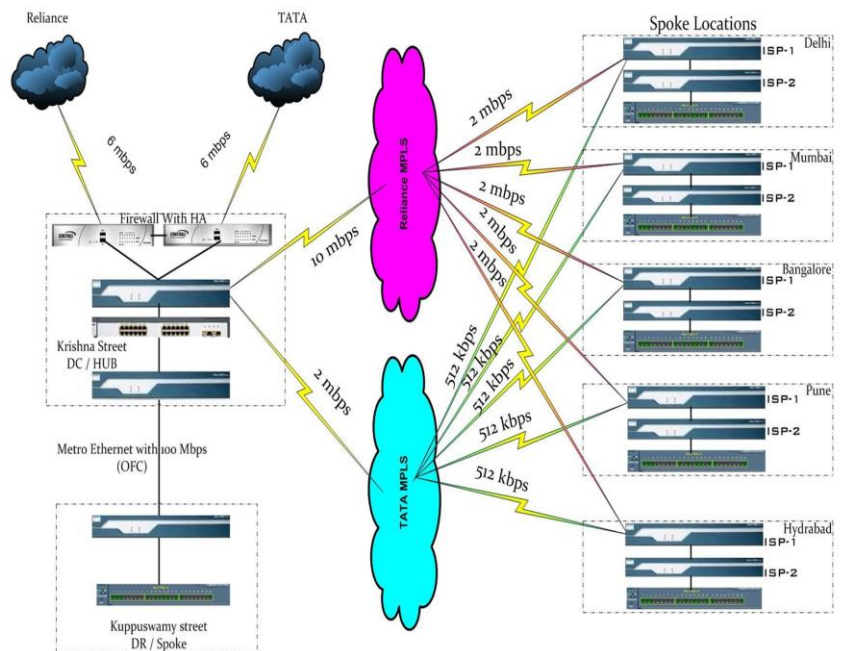
The improved response time, lower down time and enhanced security has given new confidence to roll-out new applications to support the ever growing business needs.

How the solution helped

The network upgrade project was performed over a period of 3 months. The New network is based on Cisco 3900 and 2900 routers, Cisco AVC, Cisco Prime Infrastructure, Cisco ASA firewalls with Firepower.

The Cisco Intelligent WAN based infrastructure met all the stated challenges and ensure a cutting edge WAN Network.

AVC was used to deliver traffic prioritization and enable greater bandwidth to business critical applications. Prime Infrastructure took network management to all new level and enable quicker identification of issues leading to lower downtime and faster resolutions. The security posture of the Internet edge of the company's network improves significantly with greater performance, attack prevention and Malware protection.



Dual MPLS based network deployed on Cisco Intelligent Architecture along with AVC , Cisco Prime Infrastructure and Cisco ASA firewall with Firepower.